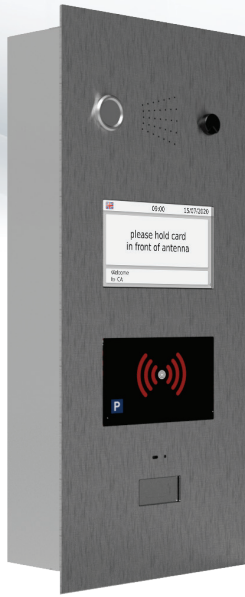


UP ZKG 5000

Data sheet

Pioneering in terms of
reliability and efficiency





ACCESS CONTROL DEVICE UP ZKG 5000 B/C

Controlling barriers to separate season parking areas, opening rolling shutters and entrance doors, the access control device does it all in a quick and reliable manner.

Whether short-term, season, debit or special cards on the basis of chip cards and barcode tickets – this device can process all kinds of ticket types.

The access control device offers interfaces to other access media that grant entry. In addition to UHF long-range readers, cameras for license plate recognition can be integrated into the system.

The device is already prepared for telephony for direct communication with the customer.

Drive	CPU	industrial embedded dual-core processor	
	Flash memory	2 separate physical media	
	Betriebssystem	Linux	
Display	Operating system	<ul style="list-style-type: none"> ▪ 4.3" TFT display (480x272 pixels) ▪ intelligent brightness control 	
Chip card reader	Type	LEGIC	
	Standards	<ul style="list-style-type: none"> ▪ ISO 15693 ▪ ISO 14443 A/B ▪ ISO 18092 (NFC) 	<ul style="list-style-type: none"> ▪ LEGIC Prime ▪ Mifare® Family
Ticket processing	<ul style="list-style-type: none"> ▪ short-term parkers ▪ season parkers ▪ season parker groups ▪ debit card parkers ▪ congress card parkers 		
Characteristics	<ul style="list-style-type: none"> ▪ potential-free contacts for control of barriers and rolling shutters and doors ▪ integration of UHF long-range readers ▪ integration of cameras for license plate recognition 		
Options	<ul style="list-style-type: none"> ▪ VoIP module ▪ analogue telephone module ▪ QR code scanner 		
Power supply	100–230 V, 50 / 60 Hz, 30 W		
Colour	stainless steel housing brushed		
Dimensions (W x H x D)	160 mm x 67 mm x 352 mm		
Weight	approx. 4 kg		
Mounting variant	flush mounting		